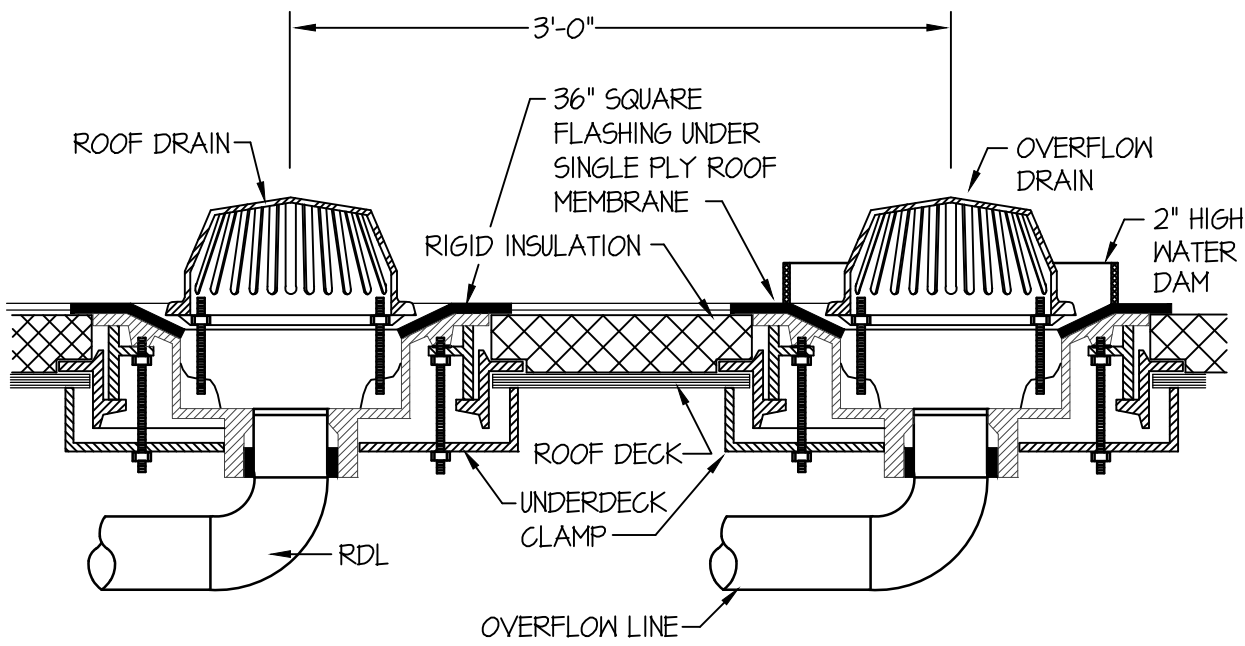
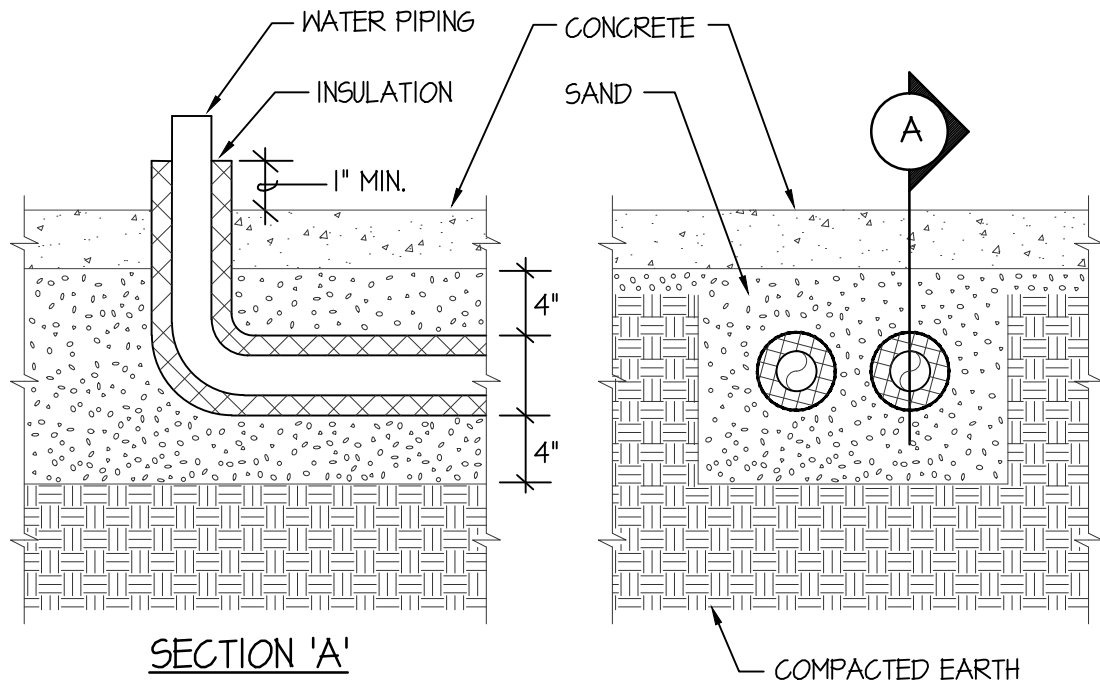


**GAS LINE CONNECTION DETAIL**  
NO SCALE

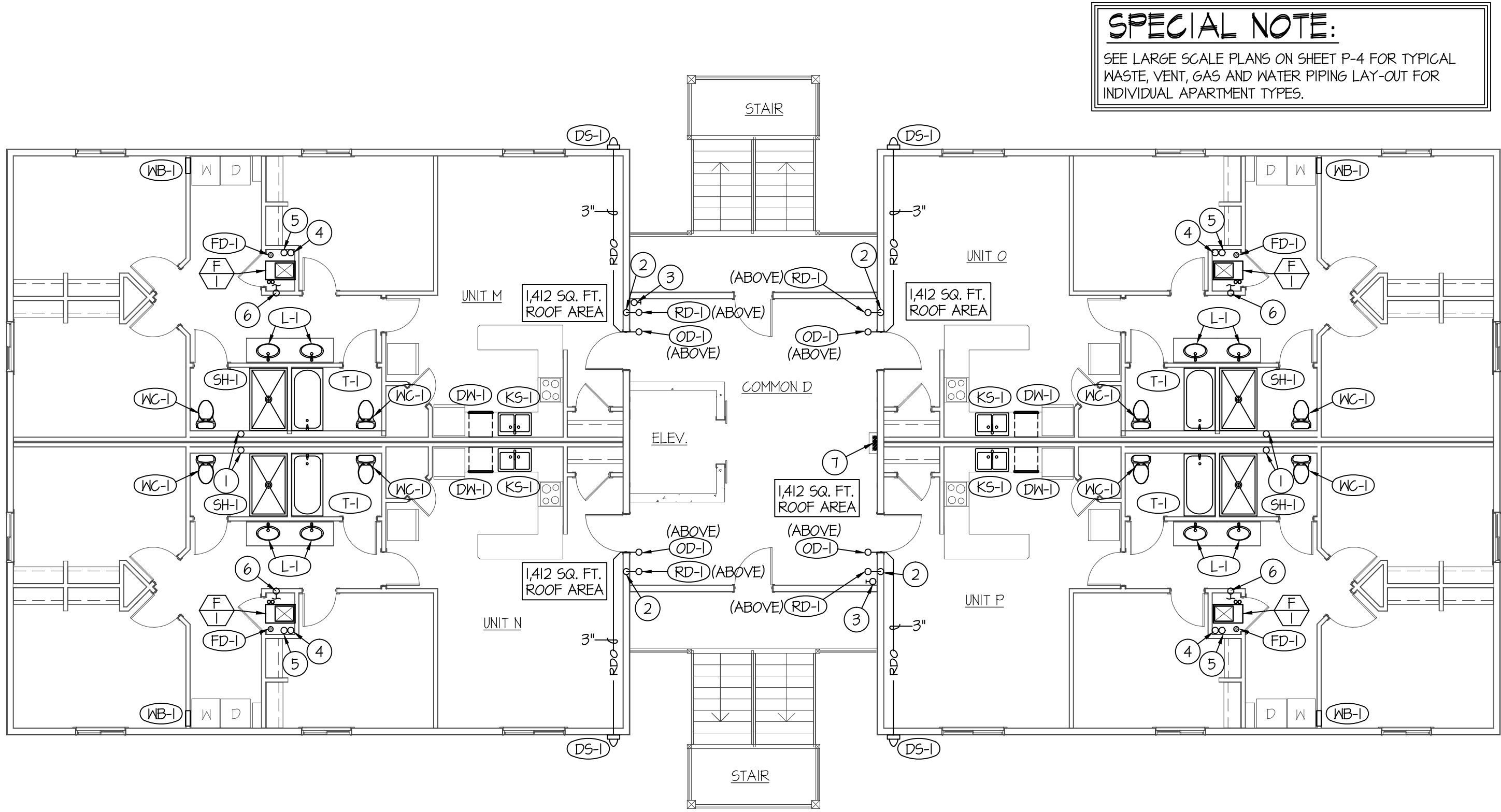


**ROOF DRAIN DETAIL**  
NO SCALE



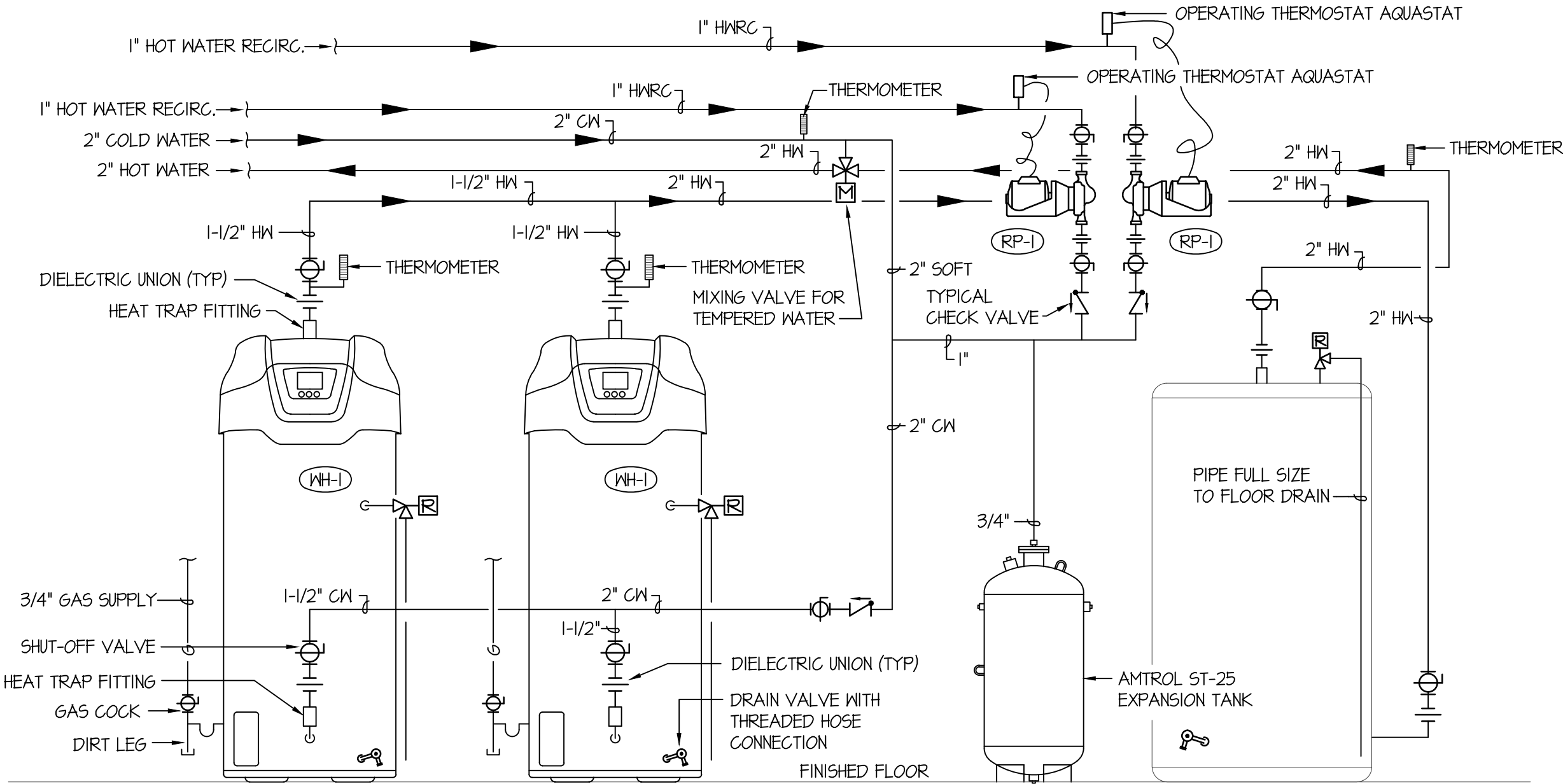
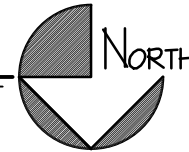
- NOTES:**
- 1 - ALL WATER PIPING INSTALLED UNDERFLOOR SHALL BE TYPE "K" COPPER OR PEX
  - 2 - WATER PIPE INSULATION ON UNDERFLOOR PIPING SHALL BE ARMAFLEX 3/4" THICK RUBBER PIPE INSULATION. TAPE INSULATION AT ALL SEAMS.
  - 3 - MINIMUM PIPE SIZE UNDERFLOOR SHALL BE 3/4" FOR COPPER, 1/2" FOR PEX
  - 4 - SAND FILL AROUND PIPING SHALL BE A MINIMUM OF 4" THICK. MATERIAL SHALL BE HAND TAMPED, RODDED OR LIGHTLY COMPACTED DURING INSTALLATION. CARE SHOULD BE TAKEN NOT TO DEFORM OR OTHERWISE DAMAGE PIPING OR INSULATION.

**UNDER SLAB PIPE INSTALLATION DETAIL**  
NO SCALE



**3RD LEVEL PLUMBING PLAN**

SCALE: 1/8" = 1'-0"



**WATER HEATER PIPING DIAGRAM**

NO SCALE

**PLAN NOTES:**

- 1 4" VENT STACK UP IN WALL TO 4" VTR. SEE SHEET P-3 FOR CONTINUATION OF PIPING SERVING LEVELS BELOW.
- 2 DROP 3" ROOF DRAIN LINE DOWN IN WALL. SEE SHEET P-2 FOR CONTINUATION OF ROOF DRAIN LINE BELOW.
- 3 4" FIRE LINE STANDPIPE UP FROM BELOW. INSTALL 2-1/2" FIRE HOSE CONNECTION AT EACH LEVEL. CONNECTION TO BE 36" ABOVE FINISHED FLOOR.
- 4 1" HW PIPING UP FROM BELOW TO SERVE APT. ON THIS LEVEL. SEE SHEET P-2 FOR CONT. OF PIPING.
- 5 1" CW UP FROM BELOW TO SERVE APT. ON THIS LEVEL. SEE SHEET P-2 FOR CONT. OF PIPING.
- 6 3/4" (2 PSI) GAS LINE UP IN WALL FROM BELOW TO SERVE APT. ON THIS LEVEL. SEE LARGE SCALE PLANS ON SHEET P-4 FOR CONNECTION TO FURNACES.
- 7 RISE (4) 3"Ø WATER HEATER FLUES UP IN CHASE THRU ALL LEVELS ABOVE 1ST LEVEL THRU ROOF TO (2) VERTICAL VENT TERMINATION ASSEMBLIES.



**Engineered Systems Associates**  
**Mechanical Engineers**

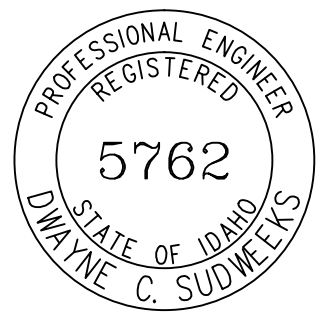
Dwayne Sudweeks  
1355 East Center - Pocatello, Idaho 83201  
Phone: (208) 233-0501 Fax: (208) 233-0529 email: esa@engsystems.com

**SAVOYE APARTMENTS**  
**REXBURG, IDAHO**

**3RD LEVEL PLUMBING PLAN & DETAILS**

PROJECT:

SHEET TITLE:



DRWN. BY:	CKD. BY:
SR	DCS
JOB NO.	DATE:
17035	MAY 2017

SHEET:  
OF: FOUR

ORIGINAL DRAWING SIGNED BY: DWAYNE C. SUDWEES  
DATE ORIGINAL SIGNED: MAY 5, 2017  
ORIGINAL ON FILE AT ENGINEERED SYSTEMS ASSOCIATES  
1355 EAST CENTER, POCA TELLO, IDAHO 83201